

PROVIX.NET
Now I CAN SEE!



Camera Systems & Lighting

MOBILE VIDEO SOLUTIONS FOR LAW ENFORCEMENT

sales@provix.net • www.PROVIX.net • (888)434-0253



PROVIX.NET
Now I CAN SEE!

Provox Safety Systems Deployed by Police and Security Services

Mobile video systems for tactical surveillance and EMS applications.



- Chalk River Laboratory
- Pinawa Laboratory
- Whiteshell Laboratory



Camera Systems & Lighting

MOBILE VIDEO SOLUTIONS FOR LAW ENFORCEMENT

PROVIX is Vision Enhancement

Provix Tactical Systems are designed to improve:

- Infrastructure protection
- Identification and monitoring of terrorist threats
- Monitoring of criminal activity
- Public order policing
- Intelligence gathering
- Surveillance Asset protection

PROVIX supplies an extensive lineup of mobile vision enhancement solutions such

- Long Range Tactical Cameras
- FLIR Thermal Imaging Cameras {Handheld and Vehicle Mounted}
- Command Center Video Solutions
- Wireless Remote Video {WiFi or SSL Internet Viewing at HQ}
- Custom Video Solutions
- Prisoner Escort Van Video Solutions [up to 8 cell/channel video and audio]
- Covert Surveillance and Digital Recording
- Emergency Vehicle Lighting
- HID and IR Remote Controlled GoLights
- LED Scene Identification Flares
- Vehicle CCTV
- Pant/Tilt/Zoom Cameras
- Tactical Response Units
- Murine Surveillance and SAR
- Secure Transmission and Viewing at headquarters
- IR and Visible Illuminators



Tactical Vehicle Video System

PROVIX.NET
Now I CAN SEE!

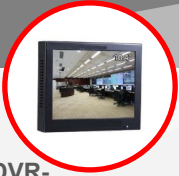


Joystick Monitor

Dual Sensor
PTZ Thermal
Camera



Rear Camera



9" DVR-
Monitor



DVR/ NVR-
Recorder



15" Monitor



Exterior Side
Camera

With Optional Gas Detection

Key Benefits:

- | | | |
|--|---|---|
| <input checked="" type="checkbox"/> Localized viewing and control | <input checked="" type="checkbox"/> Remote access via Wi-Fi or cellular | <input checked="" type="checkbox"/> Evidence gathering |
| <input checked="" type="checkbox"/> Secure encrypted remote access | <input checked="" type="checkbox"/> Secure encrypted remote access | <input checked="" type="checkbox"/> Public order policing |
| <input checked="" type="checkbox"/> PTZ joystick controller | <input checked="" type="checkbox"/> Digital recording | <input checked="" type="checkbox"/> Monitoring of criminal activity |
| <input checked="" type="checkbox"/> Integrated LCD display
(Front + Rear) | <input checked="" type="checkbox"/> Threat detection | <input checked="" type="checkbox"/> Infrastructure protection |

Optional Add-Ons:

- | | | |
|--|---|---|
| <ul style="list-style-type: none">• COFDM/TOFDM• Remote Access• Cell Phone Access• Wifi Modem | <ul style="list-style-type: none">• Cellular Modem• Lighting• Vehicle Based Gas Detection• Ram Cameras | <ul style="list-style-type: none">• 360° Vehicle Cameras• Infrared Lighting• Scene Lighting• Tower Masts |
|--|---|---|

Detectable Gasses

- Carbon Monoxide CO
- Methane CH4
- Hydrogen H2
- Hydrogen Sulfide H2S
- Nitrogen Dioxide NO2
- Carbon Dioxide CO2
- Oxygen O2
- Chlorine CL2
- Ammonia NH3
- Ozone O3
- Nitric Oxide NO
- Propane C3H8
- Hydrogen Cyanide HCN
- Hydrogen Chloride HCL
- VOC
- Sulfur Dioxide SO2

Video overlay of sensor data is displayed on cab and troop compartment monitors.

Gas Detection sensors available from Conspec or Draeger.



Dual Sensor PTZ Thermal/ CCD Camera Specifications

Pan Range	Continuous	
Tilt Range	180°	
Pan Speed	0.1°/s Min. to 180°/s Max.	
Tilt Speed	0.1°/s Min. to 180°/ Max.	
Control Interface	RS232, RS422/485	
Protocol	Pelco-D, Pelco-D Enhanced	
Thermal Sensor Primary Option	640x480, 17 micron, Vanadium Oxid 50mm, 12.4° HFOV	
Optional Lens Sizes	9mm, 35mm, 60mm	
Colour Sensor Primary Option	SD 380K Pixels/ HD Start 2130K	
Colour Sensor Zoom	30X Optical, 12x Digital, 47.8° - 1.7°	
Colour Sensitivity	0.0013 lx Colour, 0.0008 lx NIR (1/4s)	
Power Draw, no heaters	Power On Peak	24 W
	Staring—no motion	12 W
Power Draw, with heaters	All Motors moving	24 W
	Power On Peak	93.6 W
	Staring—no motion	81.6 W
	All Motors moving	93.6 W
Pre-sets	100	
Weight	9 lbs. with BigFoot	
Housing Material	Aluminum	
Operating Voltage	12 VDC to 30 VDC	
Operating Temperature	-40° C to +70° C, with heaters	
Storage Temperature	-40° C to +75° C	
Mounting	BigFoot or QuickConnect	
Other Capability/ Options	IP H.264, Absolute Encoders, HD	

WINSTED GROUP INC.
6436 HWY 89
ALLISTON, ON
1-866-542-1343



PRISONER TRANSPORT MONITORING SYSTEM



No FILE CONVERSION
5 TO 300 HOURS OF VIDEO
6 WALL MOUNT CAMERAS
WITH INTERNAL MICROPHONE

6 CHANNEL DIGITAL RECORDER, D1 HI-DEFINITION H.264 "AVI", 6 CHANNEL AUDIO,
16 GB SD CARD, 300->5 HOURS , DUAL 7" TFT LCD 400 NIT MONITORS,
6 WALL MOUNT IR CAMERAS (180 DEGREE), 6 INTERNAL MICROPHONES,
"WINDOWS READABLE FILE TYPE", NO CONVERSION REQUIRED.

TRANSPORT WITH CONFIDENCE



WWW.MOBILESAFETY.NET
WWW.EQUIPMENTCAMERA.COM
SALES@MOBILESAFETY.NET

PROVIX
6436 Hwy 89
ALLISTON, ON
1-866-542-1343

PROVIX

TACTICAL COMMAND CENTER REMOTE VIDEO SYSTEMS

HPSee: 26x Optical Zoom
Advanced LOOK Controller



Manual Controls:
Simple and Effective
Interfaces



Multiple DVR Options:
Physical and Network Drives



Tactical Camera Systems with Long Range Zoom and Thermal Imaging enable Command Center Video Viewing at the scene, in the truck or at Headquarters, while recording in HD for Consultation, Evidentiary, Training or Review Purposes.

**VIEW EVENTS
REMOTELY OFF SITE**

PROVIX COMMAND SOLUTIONS



WWW.PROVIX.NET
WWW.EQUIPMENTCAMERA.COM
SALES@PROVIX.NET

WINSTED GROUP INC.
6436 HWY 89
ALLISTON, ON
1-866-542-1343



PATROLIR PRO TACTICAL VEHICLE CAMERA

PAN TILT AND ZOOM

- STATE OF THE ART THERMAL IMAGING TECHNOLOGY
- REQUIRES NO ILLUMINATION
- HIGH SENSITIVITY DETECTOR
- 320 x 240 RESOLUTION
- COMPACT PANNING ENCLOSURE
- IT'S ALL FLIR INSIDE
- FULLY AUTOMATIC IMAGE OPTIMIZATION



FLIR's PATROLIR IS A NEW, LOW COST, THERMAL IMAGER ENGINEERED FOR LAW ENFORCEMENT VEHICLE APPLICATIONS. THERMAL IMAGING IS A POWERFUL TOOL IN LAW ENFORCEMENT BECAUSE SUSPECTS CAN'T HIDE THEIR HEAT, AND SINCE IT'S PASSIVE, SUSPECTS DON'T KNOW THEY ARE BEING WATCHED. THE PRO VERSION INCLUDES A POWERFUL LOWLIGHT CAMERA FOR LONG RANGE SURVEILLANCE WHEN LIGHTING CONDITIONS PERMIT.

PROVIX

You CAN RUN BUT YOU CANT HIDE FROM FLIR

WWW.MOBILESAFETY.NET
WWW.EQUIPMENTCAMERA.COM
SALES@MOBILESAFETY.NET

6436 HWY 89 EAST, RR2
ALLISTON, ON
L9R 1V2



PRODUCT OVERVIEW:

PAN/TILT/ZOOM - THERMAL/COLOR
(2 VIDEO STREAMS)

The Dual HP is an upgraded version of the pan/tilt/zoom camera known as the Dual i50. Although the two systems appear identical from the outside, the Dual HP is completely new on the inside. New motors driving the pan/tilt functions offer considerably improved performance with completely silent operation. In addition, the Dual HP offers continuous rotation and improved repeatability for preset and go-to targets. The rugged Dual HP delivers long life in harsh environments such as continuous salt water spray or blowing sand.

KEY FEATURES:

- ⇒ **SIMULTANEOUS COLOR AND THERMAL VIDEO STREAMS**
- ⇒ **UNCOOLED 320X240 VOX MICROBOLOMETER**
- ⇒ **HFOV FROM 26°-14°**
- ⇒ **7.5-13.5 μM**
- ⇒ **OTHER THERMALS AVAILABLE**
- ⇒ **RS232 OR RS422**
- ⇒ **ENHANCED VISCA OR PELCA D**
- ⇒ **180° PER SECOND**
- ⇒ **8.0 LBS.**
- ⇒ **.007 DEGREE RESOLUTION**

All-In-One

PROVIX.NET
Now I CAN SEE!

Rapid Deployment Kit

Self Contained, Fly Away, Grab & Go



5 Megapixel IP Camera
Stainless Steel Enclosure



Easy Mounting Bracket



Web-Interface and
Software for in the Field
Use on All Mobile Devices



Trickle Charge Battery
System With Portable Mast



Solar Array for Continuous Power



Rugged Pelican Case for Mobile Use

System Specifications



- Up to 2048x1536 colour and 1280x960 B/W resolution
- Terrorist Events
- Monitor City Wide Evacuation
- Immediate Response for Critical
- Infrastructure Demands
- Sensitivity: Color 1 lux (t=1/60s), 0.05 lux (t=1/1s), B/W 0.1 lux (t=1/60s), 0.005 lux (t=1/1s)
- Continuous 8x zoom
- 128GB Internal memory (expandable) - up to 30 fps recording
- Available lenses - 90°, 60°, 45°, 31° & 15° (depending on camera)
- Backlight compensation, automatic white balance, image distortion correction, video sensor (motion detection)
- GPRS/EDGE/UMTS/HSDPA/HSUPA/HSPA+, EVDO data communication
- HTTP/HTTPS/SSL/IP Filter access/username & password protection
- Alarm/event activation
- Audio - integrated, bidirectional microphone and speaker (dual and hemispheric lens cameras)
- Dual SIM capability with automatic switching
- Fixed IP access via Provix Connect service
- 4G/3G or Wi-Fi option, or combination of both
- IP65, stainless steel 304, white high gloss powder coat housing
- Polycarbonate dome (1/16 in.)
- -22 to +122°F (-30 to +50°C) - no additional heating required

Additional Items

- 16GB, 32GB, 64GB, 128GB storage
- GPS data embedded into camera image
- Sturdy travel case with wheels for portability
- Lens kit
- Interchangeable day/night module for dual lens camera
- Anti-vandal polycarbonate dome (1/8 in.)
- Change color (client to specify pantone)
- Alternative power supply (solar, wind, fuel cells, 72 hour battery packs)
- Ethernet port to add additional devices (Cameras, lights, external hard drives)
- Thermal sensors now available

Robotic Remote Surveillance System

PROVIX.NET
NOW I CAN SEE!

For Tactical Situations That Include:

Scene Surveillance and Identification

Cost Effective Personnel Protection

Robotic Bomb Inspection

Inspect Unsafe Grounds

Hostage Situations



- Integrated LED lighting with range up to 60M, auto tracking with PTZ camera
- New damping system with digital image stabilization (DIS) for all kinds of tough conditions
- New design of PTZ driving system provides anti-vibration performance and high precision of PTZ positioning
- Smart hidden seamless wiper, clear camera view
- IP Protection up to IP67, built-in defogging device and heater
- Full Aluminum compact PTZ case
- Integrated PTZ Control in monitor
- Lithium battery with 14-20 hour run time
- Record JPG + MPG Stills and video



CALL: 1 888 434 0253

CONTACT: SALES@PROVIX.NET

VISIT: WWW.PROVIX.NET

Portable Surveillance Camera

Instantly set-up wireless IP-based video surveillance.



PTZ CAMERA ON MOUNT

Pan Tilt Zoom (PTZ) Camera*

The PTZ camera allows the operator to pan 360° continuously, tilt from -45° to +90° and adjust the field-of-view from 2.8° to 48° (18X optical zoom).

The PTZ camera provides invisible IR illumination for covert surveillance in dark surroundings. At low ambient light levels, the camera automatically switches to BW mode with the infrared illuminator on. At higher ambient light levels, the camera automatically switches to color mode with the infrared illuminator off.

Wireless Operation

The PSC system transmits video on a wireless 802.11 network, either connecting to an existing structured network or creating its own standalone network. The video can be viewed and recorded by a PC connected to this network running the supplied application program. The PSC can be programmed to generate motion alarm events based on changes in video image content.

The PSC is available with either a 900MHz mesh connection between PSC's or with standard 2.4GHz Wi-Fi connection between PSC's. The mesh version is far more robust for two reasons – the mesh architecture is self-configuring/self-healing and the 900MHz frequency is able to better penetrate structures/obstructions.

Applications

- Perimeter surveillance around a mobile asset/terrorist target
- Tactical covert surveillance for hostage barricades
- Surveillance for sting operations: warehouses, loading docks, depots
- Border security/VIP security
- Construction site safety and security
- Video and lighting support for disaster management scenarios
- Event security for large and small venues

Features & Benefits

- Cost-effective solution
- No external power or wires required
- Easy to transport and deploy – sets up in 5 minutes!
- Rugged, weather proof design
- Viewable on a PC or Laptop
- Can support up to 6 PSC system's per network
- Rechargeable battery
- Motion alarm capable
- Records video on PC
- Supports audio with addition of microphone
- Can be hard wired to a network, if desired
- Available with either a WiFi or MESH network



Specifications

Optional Equipment (Refer to individual spec sheets for more information)

PSC Long Range Link Kit (PSC-LINK): Inserts a 5.8 Ghz long range link (up to one mile) between the system network base station and a remote monitoring station, such as a command vehicle.

PSC Range Expansion Kit (PSC-RCVR): Extends the range of the remote command station (laptop) by using a high power 2.4GHz outdoor pole mounted radio/antenna in place of the laptop's low power internal radio/antenna.

PSC Remote Antenna Kit (PSC-M-RA13 or PSC-A-RA13): Allows for placement of the antenna(s) up to 13ft height to maximize range of any system.

System			
System Components	Quick connect telescoping pole (raising camera to 6.5ft); Adjustable camera tilt/swivel bracket; Adjustable pole tilt/swivel bracket; Battery Charger; Whip antenna; 6ft antenna(s) cable; PC program; Case with integrated battery, electronics and wireless transmitter;		
Case Size	22" x 15" x 8" (56cm x 38cm x 20cm); Waterproof when closed	Weight	46 lbs (21kg)
No. of PSC Per Network	Up to 6; Performance depends upon wireless signal strength	Temperature Range	-20°C to +50°C

Cameras		
	PTZ	IR - Low cost option
PSC Model	PTZ (Pan/Tilt/Zoom) day (color) / night (BW); Automatically switches to night mode at dusk or day mode at dawn	Day (color) / night (BW); Automatically switches to night mode at dusk or day mode at dawn
Type		
Remote Pan	360° continuous pan, adjustable speed	None
Remote Tilt	-45° to +90° (digital flip)	None
Lens	2.8°- 48° FOV (18X optical zoom)	16°-36° FOV
Resolution	768 x 494 (NTSC); 752 x 582 (PAL)	
Lux	.7 color; .01 BW	.004 color; .0001 BW
Illumination Type	850nm (slight glow); 940nm (invisible) - available upon request	850nm (slight glow)
Illumination Angle	30°	60°
Illumination Range	200ft (60M)@850nm; 100ft (30M)@940nm	150ft (45m)

WiFi		Options
Frequency	PSC to PSC: 2.4GHz, 802.11b/g PSC to Laptop: 2.4GHz, 802.11b/g	BAT-7C: Spare Internal Battery A second battery allows one battery to be charging while the other is operating the PSC. Supplied in hard carry case.
Power	2.4GHz: 1000mw	
Antenna	8" omni-directional 2.4GHz whip antenna and 6ft antenna cable supplied. Antenna can be mounted directly to the case or on the pole.	
Range	1500ft+ (450M+) line-of-sight; Range is highly dependent upon antenna height and environment	

External Connectors	
Camera Input	12-position metal waterproof connector for coil cord to camera and illuminator
DC Output	3-position metal waterproof connector with both unregulated and regulated 12V DC; Unregulated 12V battery voltage output (10V-15V) at 2A max; Regulated 12V at 1A max.
A/V Connector	6 position metal waterproof connector for video out, microphone in and speaker out. Can be configured at factory to have line level audio input and output in place of the microphone in and speaker out
Antenna Connector	N-type female with tethered cap
Network	Waterproof RJ45 for a hard wired CAT5 cable connection with tethered cap when not in use; Usage requires operating an internal switch, which disables wireless operation (WiFi version only)

PC Monitoring Station		Battery			
PC Reqs.	Not supplied; See requirements on previous page	Type	12V Lead-acid, 20Ah	Charge Time	6 hours
Application Program	Supplied with each PSC; Allows for system setup and configuration; Can view all cameras independently or simultaneously; Reports alarm conditions received by the PSC's	Power Input for Charging	60W; 90-264VAC; (For the PAL version, order the power cord adapter separately at no charge, part number PCA-XX, where XX is the country code.)		
Alarm Conditions Reported	(1) Programmable motion detector for each camera; (2) Optional Radiation sensor programmable threshold reached; (3) Low battery condition	Run Time	Run time in hours with illumination off/on: WiFi IR: 21/11; MESH IR: 16/10 WiFi PTZ: 10/8; MESH PTZ: 9/7		

PORTABLE IR RUGGED PTZ INSPECTION CAM

Designed for fixed and mobile video applications. With its high resolution zoom and powerful IR module, precise PTZ system and damping vacuum systems it is **perfect for Bin, Ore Pass, Stope & Brow inspection and Breaker Monitoring.**



IP67, IR 120M, DIS, Image Flip, Vacuum/Magnet Mount, Wiper



Pan Range	360° continuous
Pan Speed	0.04° -120°/s, adjustable
Tilt Range	-15°~90° with image flip
Tilt Speed	0.3° ~90°/s adjustable
Preset Speed	Pan: 120°/s; Tilt:90°/s
Preset	256
Preset Precision	±0.05°



- Efficient IR lighting with range up to 120M, auto switch as per zooming
- New damping system with digital image stabilization (DIS) for all kinds of tough conditions
- New design of PTZ driving system provides anti-vibration performance and high precision of PTZ positioning
- Vacuum and magnetic sucker for secure and convenient installation
- Wide range of voltage input, anti-surge, to avoid wrong connection
- Smart hidden seamless wiper, clear camera view
- IP Protection up to IP67, built-in defogging device and heater
- Full Aluminum compact PTZ case with high strength



Dual PTZ System



The Dual PTZ Camera is designed for a wide variety of mining applications. It consists of a thermal imager, high resolution zoom module, and pan/tilt/zoom. It enables operators to see clear details under dark or foggy conditions.

FEATURES

- Built-in 384*288 full time high sensitive thermal imaging sensor, provides clear view in a dark environment
- Integrated HAD 28X zoom module, 550TVL, 0.0015Lux
- PTZ system with high precision and higher holding torque. PTZ positioning precision up to $\pm 0.05^\circ$
- Aluminum PTZ case with high strength, special Fabrication Processing, full weather proof
- Fully sealed design, IP index up to IP67, Built-in surge and lightning strike protection device
- Built-in integrated defogging device, working temp range $-45^\circ\text{C} \sim 55^\circ\text{C}$
- 3 video outputs: thermal video, zoom module video and switch video
- Detect protocol & Baud rate automatically, soft address supported, convenient for use
- Digital image stabilization
- Dynamic Noise Reduction (1~5 steps)
- Image flip for stand / ceiling mount

PTZ THERMAL CAMERA



What's in the Box?

A complete system

- 7" color LCD high resolution screen with 2X Zoom Capability and RAM mount
- 25' System Power and Video Cable and 12 volt Power cable
- Mounting Hardware And Pan Tilt Assembly
- Integrated FLIR Thermal Camera
- Wireless Dash Control/Remote



The **Thermal PTZ** is a low cost, high resolution thermal imaging system that allows the user to see in total darkness. Utilizing a 320 x 240 resolution FLIR Camera, the system can easily see man sized targets from over 1500 feet. The thermal core uses long-wave infrared sensor technology and can easily see through smoke, fog, rain and many other atmospheric conditions that could not easily be penetrated with other technologies

The **Thermal PTZ camera** offers full 360° rotation and 135° tilt for complete situational awareness. Models include either a hard wired toggle control or wireless handheld or dash mounted remote controls. The RF wireless remote controls can be programmed to a desired frequency for uninterrupted use with one or multiple systems. The **system** is easily mounted using an innovative mounting plate with underlocking interface, a simple two step mounting process. The pan/tilt enclosure uses high torque motors with encased metal gears for trouble free operation.

The **Thermal PTZ** is enclosed in a weatherproof housing that is UV Ray and saltwater resistant for both land and sea applications. The entire system operates on a 12V DC platform and is ideally suited for vehicles and watercraft. Whether used for Law Enforcement, First Responders or Surveillance and Security applications, the **system** is the product of choice based on price and performance.

FLIR PathFindIR Camera

- Type & Material: 320 x 240 Uncooled Microbolometer—
- Field of View: 35° H x 27° V
- Spectral Band: 8-14 Microns Long Wave Infrared (LWIR)
- Pan / Tilt: 370° Rotation / 135° Tilt
- Speed: Fast / Slow
- Operation: Wired / Wireless Remote Control Options
- Power Requirement: 9-16 VDC Power: 12 VDC
- Video Output: NTSC / Pal
- Dimension: 6.76" x 7.25" x 8" Weight: 4 lbs.
- Video: BNC / RCA Quick Disconnect
- Warranty: 1 Year Limited
- Hertz: 30 Hertz for North America Not For Export.
- Export Model Available in 9 HZ.

Specs

Classification Information: 30 Hz. Version
 These products are controlled for export under US Department of Commerce (DOC), Export Administration Regulations (EAR), Export Control Classification Number (ECCN) 6A003.b.4.b. These cameras contain a focal plane array controlled to 6A002.a.3.f. U.S. Government authorization may be required for all destinations except Canada
 Classification Information: 9 Hz. Version
 These products are controlled for export under US Department of Commerce, Export Administration Regulations (EAR), Export Control Classification Number (ECCN) 6A993. They may be exported under ECCN 6A993, NLR (No License Required) to all countries except terrorist supporting countries (Country Group E:1), unless otherwise prohibited.

PathFindIR II

See Clearly in Total Darkness

PathFindIR II is a powerful thermal night vision system that lets you see road hazards clearly in total darkness, detecting and alerting you to nearby vehicles, people, and animals.

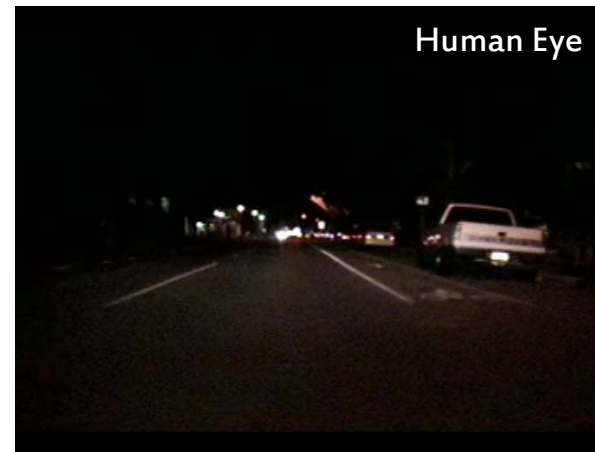
See Farther Than Ever Before

Headlights usually only let you see about 450' straight ahead, but PathFindIR II sees heat not light, so you can see everything in front of you up to four times farther down the road. Now you can see clearly, night and day, in good weather and bad, without being blinded by the glare of oncoming headlights.

And when you can see farther you have more time to react. More time means more options, smoother driving in emergencies and more room to stop. It's the one thing that can help you avoid traffic accidents. With PathFindIR, you can see pedestrians, cars, animals, and virtually any other hazard from farther away, and as they approach the road from either side.

Benefits of PathFindIR II:

- See in total darkness
- Automatic detection and alerts of Pedestrians and Animals
- See pedestrians and vehicles past the glare of oncoming headlights
- See many hazards over four times farther away than with headlights
- See through dust and smoke
- Have more time to react
- Help avoiding accidents and staying safe





PT-SERIES

FLIR PT-SERIES

High Performance Pan/Tilt Multi-Sensor Thermal Cameras

FLIR's PT-Series brings thermal and visible-light imaging together in a system that gives you video and control over both IP and analog networks.

The PT-Series' precision pan/tilt mechanism gives you accurate pointing control while providing fully programmable scan patterns, radar slew-to-cue, and slew-to-alarm functions. PT-Series cameras define a new standard of performance with five models that provide full 640 x 480 thermal resolution with full WDR Thermal video.

Designed for high performance, easy installation, and long-term reliability, PT-Series cameras give you the image detail needed for optimal threat detection capability and peak analytics performance - even in challenging imaging environments.

Because FLIR understands that you need cameras for the real world, PT-Series cameras are qualified beyond industry standard for survivability, and are backed by FLIR's unparalleled 2-year system warranty and 10-year detector warranty.



Crisp image detail gives you optimum clarity to identify and address any number of security threats

KEY FEATURES

- Simultaneous IP and analog video outputs – thermal and visible-light – along with IP and serial control interfaces for easy integration into IP or analog networks; use them in an existing analog environment, and migrate easily to a future IP network
- Sun-safe VOx uncooled thermal sensor technology; looking directly at the sun won't damage FLIR uncooled thermal security cameras
- Exchangeable camera cassettes allow for quick upgrade or repair of sensors and optics
- All 640 x 480 resolution products are based on FLIR's 17-micron pixel pitch arrays, the most advanced uncooled detectors available on the commercial market
- Open IP standards for plug-and-play integration; ONVIF compliant
- Multiple simultaneous channels of streaming digital video available in H.264, MPEG-4, or M-JPEG formats

Specifications



Camera Model PT-Series			
Camera Platform Type	PTZ Multi-Sensor	PTZ Multi-Sensor	PTZ Multi-Sensor
Thermal Camera Specs			
Array Format (NTSC)	160 × 120	320 × 240	640 × 480
Detector Type	Long-Life, Uncooled VO× Microbolometer	Long-Life, Uncooled VO× Microbolometer	Long-Life, Uncooled VO× Microbolometer
Effective Resolution	19,200	76,800	307,200
Pixel Pitch	25 µm	25 µm	17 µm
Field Of View	24° × 20° (PT-124; 9 mm) 17° × 14° (PT-117; 13 mm) 12° × 10° (PT-112; 19 mm)	48° × 39° (PT-348; 9 mm) 34° × 28° (PT-334; 13 mm) 24° × 19° (PT-324; 19 mm) 13° × 10° (PT-313; 35 mm) 7° × 5° (PT-307; 65 mm) 4.6° × 3.7° (PT-304; 100 mm)	45° × 37° (PT-645; 13 mm) 25° × 20° (PT-625; 25 mm) 18° × 14° (PT-618; 35 mm) 12° × 10° (PT-612; 50 mm) 10° × 8° (PT-610; 65 mm) 6.2° × 5° (PT-606; 100 mm)
Zoom	2× E-zoom	2× & 4× E-zoom	2× & 4× E-zoom
Spectral Range	7.5 µm to 13.5 µm	7.5 µm to 13.5 µm	7.5 µm to 13.5 µm
Focus Range	athermalized, focus-free	athermalized, focus-free	athermalized, focus-free
Outputs			
Composite Video NTSC or PAL	Standard	Standard	Standard
Video over Ethernet	Two independent channels of streaming MPEG-4, H.264, or M-JPEG for each of two cameras	Two independent channels of streaming MPEG-4, H.264, or M-JPEG for each of two cameras	Two independent channels of streaming MPEG-4, H.264, or M-JPEG for each of two cameras
Control			
Point to point (stand alone)	Yes	Yes	Yes
Ethernet	Yes	Yes	Yes
Serial	RS-232/-422; Pelco D, Bosch	RS-232/-422; Pelco D, Bosch	RS-232/-422; Pelco D, Bosch
Network Enabled	Yes	Yes	Yes
Software Developer's Kit	Option	Option	Option
External Analytics Compatible	Yes	Yes	Yes
Pan/Tilt Performance			
Pan Angle/Speed	Continuous 360°; 0.1° to 60°/sec	Continuous 360°; 0.1° to 60°/sec	Continuous 360°; 0.1° to 70°/sec
Tilt Angle/Speed	+90° to -90°; 0.1° to 30°/sec	+90° to -90°; 0.1° to 30°/sec	+90° to -90°; 0.1° to 30°/sec
Programmable presets	128	128	128
General			
Weight	~37 lb (configuration dependent)	~37 lb (configuration dependent)	~37 lb (configuration dependent)
Dimensions (L,W,H)	13.7" × 18.4" × 12.8" (348 mm × 467 mm × 326 mm)	13.7" × 18.4" × 12.8" (348 mm × 467 mm × 326 mm)	13.7" × 18.4" × 12.8" (348 mm × 467 mm × 326 mm)
Input Voltage	24 VAC (21-30 VAC) 24 VDC (21-30 VDC)	24 VAC (21-30 VAC) 24 VDC (21-30 VDC)	24 VAC (21-30 VAC) 24 VDC (21-30 VDC)
Power Consumption (Consult product manuals for details of power requirements)	24 VAC: 85 VA (max w/o heaters) 215 VA (max w/heaters) 24 VDC: 65 W (max w/o heaters) 195 W (max w/heaters)	24 VAC: 85 VA (max w/o heaters) 215 VA (max w/heaters) 24 VDC: 65 W (max w/o heaters) 195 W (max w/heaters)	24 VAC: 85 VA (max w/o heaters) 215 VA (max w/heaters) 24 VDC: 65 W (max w/o heaters) 195 W (max w/heaters)
Visible Light Camera			
Sensor Type	Sony FCB-EX1010		
Sensor Type	1/4" Exview HAD CCD		
Lens Field of View	57.8° (h) to 1.7° (h)		
Focal Length	3.4 mm to 122.4 mm		
Zoom	36× Optical zoom, 12× E-zoom		
F/#	1.6 to 4.5		
Effective pixels (NTSC)	380,000	380,000	380,000

identiFINDER® R200

Spectroscopic Personal Radiation Detector

The FLIR identiFINDER R200 is a rugged, pager-sized Spectroscopic Personal Radiation Detector (SPRD). It provides full ANSI N42.32 Personal Radiation Detector (PRD) compliance and features next-generation solid state detector read-out technology that delivers ANSI N42.48 SPRD compliance with nuclide identification. Law enforcement agencies and first responders use the R200 during routine traffic stops or high visibility events and in mass transit or critical infrastructure entry control points. The OneTouch Reachback™ feature uses the latest advancements in Bluetooth® and web server technologies to provide large-scale situational awareness by alerting others before arriving on-scene. The clear user interface and simple data presentation common to all identiFINDER products allow the R200 to quickly integrate with existing operational protocols and reduce the training burden.

RADIOISOTOPE IDENTIFICATION

Enables immediate front-line detection and response during a radiological event

- ANSI N42.32 PRD compliant
- ANSI N42.48 SPRD compliant, with nuclide identification
- SiPM technology with CsI detectors provide <7.5% resolution
- Field-proven template matching algorithms

PAGER-SIZED & RUGGED

Belt-wearable for daily passive radiation monitoring

- 1.5 meter drop tested, IP67-rated
- No user maintenance
- Automatically calibrated and stabilized

SHARED COMMON USER INTERFACE

Familiar interface aligns with typical operating procedures

- Simple three-button interface
- Clear, easy-to-read results
- Web-based software for easy data retrieval



Belt-wearable for easy access



Easy-to-read interface for quick threat detection

FIDO X2

Ultra-Lightweight Explosives Trace Detector

The FLIR Fido X2 is an ultra-lightweight, handheld explosives trace detector (ETD). It provides an unprecedented combination of sensitivity, speed, and ease of use. Its award-winning TrueTrace™ technology detects threats with higher sensitivity and faster clear-down than similar products. Fido X2 performs fast ten-second analysis and provides cost-effective operation with reusable sampling swipes. On-device video training provides real-time help and reduces the cost and logistical burden of recurrent training. With thousands of units fielded in over 40 countries, Fido X-series products are the most trusted handheld ETDs for critical security applications.

SUPERIOR PERFORMANCE

Fido X2 is used by law enforcement in random or entry control checkpoints or during elevated threat patrol

- Broad, class-based identification
- Detects multiple types of homemade, commercial, and military explosives with a single sample
- More sensitive than other products in its class
- Reusable sampling swipes, vapor detection capability

FAST, TRUE TRACE DETECTION

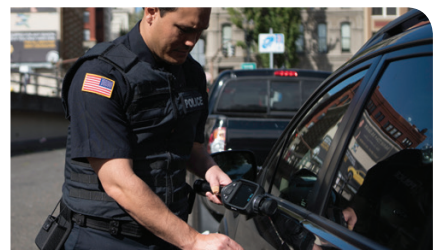
Patented TrueTrace technology helps maximize system operational availability

- Analysis in less than ten seconds
- Rapid clear-down within seconds
- Fast three-minute start-up
- No radioactive ionization source or hazardous chemicals

SIMPLE, GUIDED OPERATION

From power up to power down, Fido X2 guides the user through operation

- On-screen prompts
- Simple go/no-go alarms
- On-device video training
- Ultra-lightweight <1.5 lbs (680 g)



LS-SERIES

Compact Thermal Night Vision Monocular



A TACTICAL ADVANTAGE IN THE PALM OF YOUR HAND

Introducing FLIR LS-Series, the newest compact thermal night vision camera designed specifically for law enforcement. For years, law enforcement agencies around the world have been using FLIR's handheld systems for surveillance, pursuit, capture and evidence gathering. All of FLIR's considerable experience in law enforcement and military applications culminates in FLIR LS-Series.

No matter how clever a suspect may be, they can't hide their heat. Rather than rush on the scene with a flashlight that instantly gives away your position and only illuminates your immediate area, FLIR LS is just as portable, and exponentially more effective. You can see in pitch black conditions where traditional night vision fails. You can see through smoke, dust and light fog. Even light foliage and camouflage are powerless against thermal imaging. You'll be just as successful using FLIR LS during the day as you will at night. Take away every hiding spot with FLIR LS-Series.



BHS-SERIES

Bi-Ocular Thermal Night Vision

PROVIX.NET
Now I CAN SEE!



SEE FARTHER AT NIGHT

The FLIR BHS-Series Thermal Imaging Camera brings your other eye into play. Featuring a full coverage eyepiece, inter-ocular adjustment, ergonomic comfort, quick-disconnect lenses, and the unrivaled performance that only FLIR's high-resolution thermal cores can deliver, the BHS is a must-have for:

- Extended patrols
- Covert surveillance
- Critical infrastructure protection
- High-threat security missions

The advanced image-processing algorithms in BHS provide crisp, clear thermal video day and night, at more than a mile away. So you can observe without being detected and act decisively when the time is right.

Visit www.FLIR.com/BHS for more information, including a product selector guide, interactive simulator, case studies, videos and more.



Call: 1 888 434 0253

Contact: sales@provix.net

Visit: www.provix.net

ThermoSight Series



APPLICATIONS

- TARGET ACQUISITION
- RECONNAISSANCE
- COVERT OPERATIONS
- SURVEILLANCE
- SPECIAL LAW ENFORCEMENT

FEATURES

- Multi-use design
- Longwave thermal imaging sensor
- In-line configuration
- Ergonomic user-interfaces
- Easy to use quick detach locking throw lever
- Multiple Control Options
- Adjustable magnification
- Rugged, small and lightweight
- Accepts multiple battery types
- It's all FLIR inside

BENEFITS

- Optimized as a direct view thermal sight. Can be used in front of day optics as a clip-on, rail mounted thermal weapon sight. Is compatible with all combat optics and is rapidly adaptable to most weapons platforms. Accurate in direct view and clip-on modes.
- Provides crisp imagery daylight through total darkness, fog, smoke, dust, and most obscurants
- Low profile minimizes height above rail reducing interference with other devices and snag hazards
- Allows operators to keep positive control of the weapon's aimpoint while adjusting the sight
- Compatible with any MIL-SRD-1913 Picatinny rail system
- A mini-joystick placed at the operator's thumb when supporting the weapon under the handguard or at a user selected location via a wired remote control pad allows operators to control the sight and adjust the IR image without changing their hand positions
- Wide field for increased situational awareness and narrow field for identification and targeting. All compatible with standard day optical sights
- Minimizes impact on host weapon and reduces operator fatigue. Designed for extreme operating environments and tested to withstand thousands of rounds of rapid fire gun shock
- AA or CR123 (installed in any orientation)
- FLIR controls the entire supply chain of the critical technology inside the T70 ensuring fast service and long term support.



Tactical Pocket Scope



Recon® M24

FEATURES

- 320 x 240 FPA Digital
- zoom Lightweight
- Simple operation
- Multi-use capability
- Reliable battery life
- Remote operation Full
- MIL hardened It's all
- FLIR inside

BENEFITS

- High resolution imagery
- Capable of E-Zoom up to 4x
- Carry in your pocket comfortably
- Speeds proficiency for first time users, buttons for ambidexterous use Adaptable for handheld or tripod mount
- Over three hours run time
- Fully controllable through the USB Port with separate video output Ruggedized to military standards
- FLIR controls the entire supply chain on the critical technology inside Recon systems, ensuring fast service and long term support



Recon® M18

FEATURES

- 640 x 480 FPA
- Digital zoom
- Lightweight
- Simple operation
- Covert laser pointer
- Multi-use capability
- Use Commercial Batteries
- It's all FLIR inside

BENEFITS

- High resolution imagery
- Capable of E-Zoom up to 4x
- Carry in your pocket comfortably
- Speeds proficiency for first time users, buttons for ambidexterous use
- Long-distance laser pointer for missions or short distance for training
- Use as a handheld or tripod mount
- Use standard CR-123
- FLIR controls the entire supply chain on the critical technology inside Recon systems ensuring fast service and long term support



30' (9 m) extension

Remote Video Surveillance Trailer

Real-time remote monitoring of assets



360° Monitoring



Monitor unmanned drilling rigs and equipment

Monitor access roads and perimeter areas

Monitor containment levels and storage facilities

Monitor material left on site materials

24/7 access to live video or archival footage

Features

- Dual Pan/Tilt/Zoom Cameras
- Retrieve and store video as required
- Portable Unit Designed for Rapid Deployment
- Perfect for short or long term surveillance
- Ability to elevate up to 25 feet
- Run time of over 7 days
- Solar panels and diesel generator
- Viewable from remote location

Anti-theft Measures

- Removable trailer tongue
- Dual locking compartment doors
- Wheel clamp/boot immobilizes trailer
- Offsite event recording
- Onboard Shock Sensor to detect tampering of the trailer

REARVIEW CAMERA SYSTEM

ADD A REARVIEW CAMERA SYSTEM TO ANY VEHICLE

PARKING GRIDLINE MIRROR SPECIFICATIONS:

4.3-INCH TFT LCD MIRROR MONITOR

480 X 272 RESOLUTION DISPLAY

ANTI-GLARE COATED GLASS

TWO VIDEO INPUTS

REVERSE TRIGGER OVERRIDE

ADJUSTABLE LCD BRIGHTNESS AND CONTRAST



ONSTAR AUTO DIM MIRROR SPECIFICATIONS:

ONSTAR READY MIRROR MONITOR

3.5-INCH TFT LCD MIRROR MONITOR

LCD DIMS AUTOMATICALLY AT NIGHT

4:3 ASPECT RATIO

REVERSE OVERRIDE

HIGH RESOLUTION DISPLAY

OEM APPROVED



1/4 INCH CCD COLOUR CAMERA SPECIFICATIONS:

1/4 INCH CCD COLOUR CAMERA

160—DEGREE PERIPHERAL VIEW

WATERPROOF CASE WITH ANTI-FOG LENS

0.5 LUX LIGHT SENSITIVITY

RCA VIDEO CONNECTIONS



ACTUAL SIZE

LIGHTS

Hella, Nordic, VisionX, PSE Amber, Whelen, Provix, JWSpeaker



**Remote Controlled
Searchlights**



**Portable/ Battery
Operated Lights**



Light Bars



**Warning Light Sticks
& Arrow Boards**



Flood/Spot Lights



LED Amber Lights



LED Scene Lighting



LED Work Lights

Provix Power Tower

Equipped with any combination of lights & cameras

- Operation: (1) 1000lbs Hand Winch
- Mast Cable: 3/16" Galvanized Aircraft Cable
- 125 mph Wind Resistance
- Trailer Dimensions: 7'L x 7'W
Trailer Bed
- Hitch: 2" Ball Coupler
- Wiring: 7-Pin Flat
- Axle: 3,500lb
- Weight: +600lbs



- Provides a safe and effective way for operators to quickly deploy cameras, security devices and other equipment to elevations up to thirty feet.
- Features a telescoping light tower that folds over for easy transportation.
- Rotating boom allows for 360° rotation.
- Removable mast head when not in use.
- Contains two 265 watt solar panels and a 500aH capacity battery bank with 250aH being usable.
- Mast Guidance System
- Custom builds can be provided for higher wind speed resistance when fully raised.



Component Control Center

GOLIGHT/RADIORAY[®] LED LED Remote Control Searchlights

LED Technology

- Remote Controlled Operation
- Three Different Remote Options
- 370° Rotation x 135° Tilt
- Permanent and Portable Mounting Options
- U.V. and Salt Water Resistant
- 3 Amps with 12v Power Source
- 3-Year Limited Warranty
- Plano-Convex Lens Technology
- Cast Aluminum Heat Sync
-

PERMANENT MOUNT MODELS

Wireless Hand-Held Remote - 20004 (white) 20514 (black)

Wired Dash Mount Remote - 20204 (white)

Wireless & Dash Remote - 20674 (white) 20494 (black)

PORTABLE MODELS - Suction Cup & Permanent Shoe

Wired Remote - 51494(charcoal)

Wireless Remote - 79004 (white)

PORTABLE MODELS - Suction Cup & Magnetic Shoe

Wireless Hand-Held Remote - 79014 (white)


79514 (black)



Provix High Output LED Lightbar

PROVIX.NET
Now I CAN SEE!



- Available with 6, 12, or 18 High Power LED plug-in modules
- Deep parabolic reflector optix
- Built-in Traffic Director
- Standard Dimmer and Pattern feature
- Built-in and programmable flash patterns
- Configurable with IQ Software
- Programs uploadable via USB
- Amperage draw:
 - 6 LED module - 0.65A / 12 LED module - 1.15A / 18 LED module - 1.75A
- Operating Temperature: -40°C to +65°C (-40F to +149F)
- 15 conductor 16 feet harness
- UV treated polycarbonate lens
- Screw down lens to base
- Available colors: Amber, Blue, Clear, Red, Green 
- Dual color modules available
- Meets all applicable SAE Class1 and California Title XIII when properly configured
- Available sizes:
 - Width - 13", Height - 2", Length - 24" / 36" / 48" / 60" / 72"



LED FLARES: A Better Alternative To Fusee Flares

ELIMINATE THE
RISKS POSED BY
FUSEE FLARES

WINSTED GROUP INC.
6436 HWY 89 RR2
ALLISTON, ON
1-866-542-1343

PROFLARE AN ENVIRONMENTALLY FRIENDLY SOLUTION TO EMERGENCY LIGHTING

ELIMINATES RISK OF FIRES

ELIMINATE DANGEROUS COMBUSTIBLE FUSEE FLARES THAT ARE A RISK TO VEHICLES SURROUNDINGS AND PERSONNEL WITH A SELF CONTAINED RECHARGEABLE POWERFLARE.

AN ENVIRONMENTALLY SAFE SOLUTION

AN ECO-FRIENDLY SOLUTION THAT ELIMINATES CHEMICAL AND SMOKE RESIDUE: SAFER FOR THE ENVIRONMENT AND YOUR PERSONNEL..

IMMEDIATE COST SAVINGS

LED LIGHTS LAST FOR YEARS. BATTERIES ARE RECHARGEABLE, AND THE BREAK EVEN POINT IS AFTER 10 HOURS OF USE, COMPARED TO A CONVENTIONAL FUSEE FLARE.

YOU CHOOSE

RECHARGE OR REPLACEMENT BATTERIES
HARD OR SOFT CASE
6 DIFFERENT COLOR LEDs
INDESTRUCTIBLE
REPLACE FUSEE FLARES WITH A SAFER
ENVIRONMENTALLY FRIENDLY PRODUCT THAT HAS A
COST BENEFIT TO YOUR DEPARTMENT.



PROVIX

WWW.MOBILESAFETY.NET
WWW.EQUIPMENTLIGHT.COM
SALES@MOBILESAFETY.NET

PROVIX.NET
Now I CAN SEE!

CALL TOLL FREE: 1-888-434-0253

CONTACT: SALES@PROVIX.NET

VISIT: WWW.PROVIX.NET

ISO 9001: 2015 Certified